

Week of May 1, 2016

# Fitting In

Where can I belong?

## At First Pres

### The Online Giving Edition

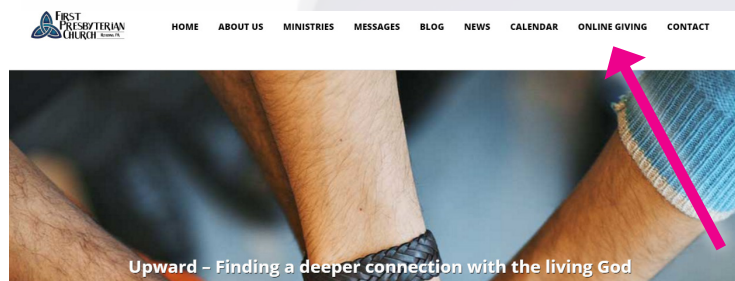
In a move to support your generosity, we're implementing a new way to give. YOU CAN GIVE WHENEVER AND WHEREVER IT SUITS YOU via ONLINE GIVING! Here's the skinny on our great new technology.

You don't always have time to write a check and we've ALL left it at home one Sunday and had to mail it in or try to remember to bring it the following week. Now First Pres has introduced a whole new solution to that problem. There are THREE new ways to give.

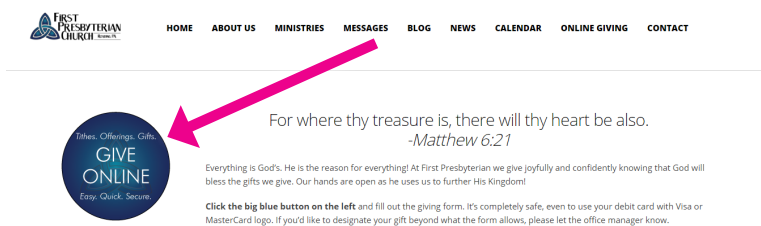
1. Via our Webpage
2. Via Text
3. Via our Custom Phone App

These are easy, quick and secured with the latest technology by the leader in church online giving.

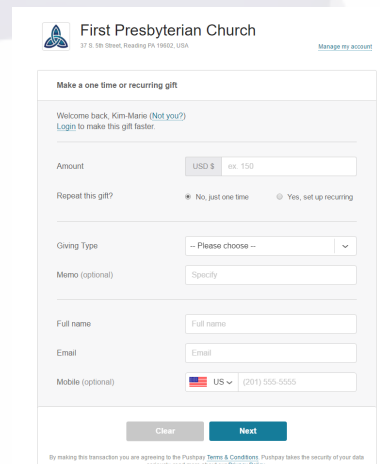
### VIA THE WEBPAGE



1. Navigate to [www.fpcreading.org](http://www.fpcreading.org). Across the main menu click the "Online Giving" tab.



2. Click the BIG BLUE BUTTON.

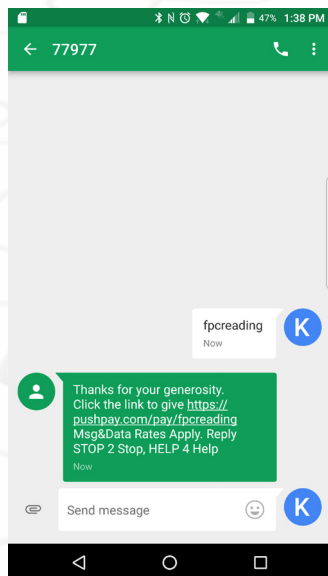


3. Follow the prompts and fill out the form!

You can give once, or set up a giving schedule so you don't even have to worry about it.

You can pay by card or e-check.

## VIA TEXT



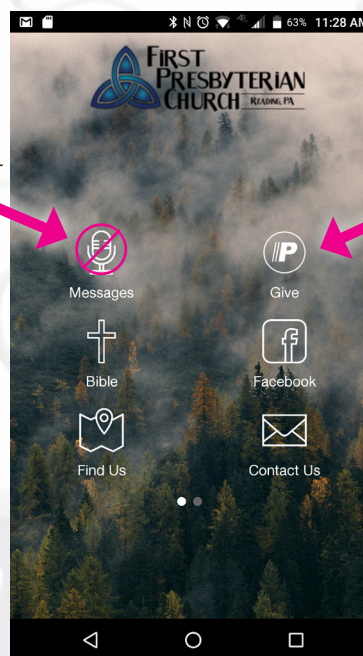
### 1. Text **fpreacding** to **77977**.

Everytime we tell you where to text, the government wants us to tell you that: When you send "fpreacding" to 77977 you will receive a one-time reply containing a link to give to First Presbyterian Church (1 msg/request). Please be aware that msg & data rates may apply. For full terms & conditions please visit <https://pushpay.com/terms>. For the privacy policy please visit <https://pushpay.com/privacy>. For help reply HELP or STOP to cancel.

### 2. Click the link, follow the prompts.

3. When you are all done, you will then get an invitation to give via our great new APP!

(Don't go here yet, it's still under construction.)



Click here

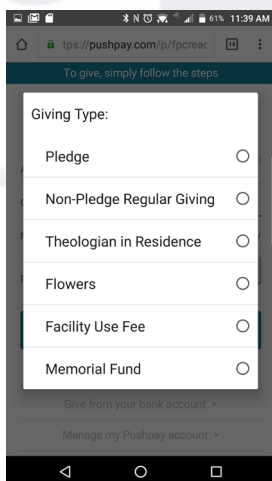
## VIA THE APP

1. Text to give your first time and respond to the invite for the app, or go to the appstore on your iPhone or Android and search for **First Presbyterian - PA**. You will be able to find the app in Google Play and iTunes by entering **First Presbyterian - PA** into the search bar. Please be aware that apps are prioritized by number of downloads, therefore, our custom church app may be towards the bottom of the search results until it is downloaded a few times. Look for the one with our logo.



2. (This is it, isn't it pretty?) Click on the **Give** button. Then follow the prompts.

Like the webpage, you will be given the opportunity to decide if you want to give a one time gift, or if you want to set it and forget it with a repeating gift set to go automatically with your schedule. You can even tell us what it's for.



If you are having problems, or would just like more information, feel free to stop into the office and talk to Kim-Marie. Bring donuts.